

RICMOTECH™

HIGH PERFORMANCE
SIM-RACING EQUIPMENT

APX Monitor Stand Assembly Guide



Tools needed:

½" Wrench

5/16" Wrench

#2 Phillips Screwdriver

Tape Measure

Blanket or other soft surface to work on

Please call us if you have any problems during the
assembly process.

305-417-9241

Due to constant improvements to our products, the product you receive may vary slightly from the product shown in the illustrations.

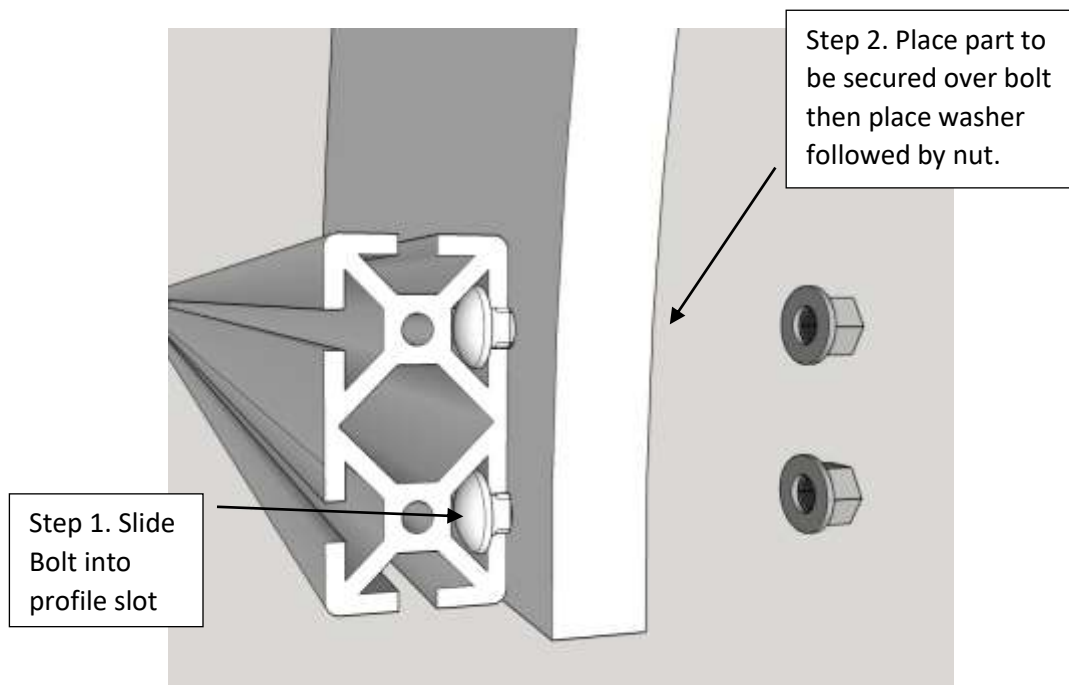
Parts Included

Item Code	Quantity		Item	Image
	Single Monitor	Triple Monitor		
F2	2 Pair	2 Pair	Feet	
E6	3	3	Aluminum Profile 1.5" X 1.5" x 42"	
E5	0	2	Aluminum Profile 1.5" X 1.5" x 16"	
C2-1	10	30	Carriage Bolt 5/16-18 x 0.75	
C2-4	8	8	Carriage Bolt 5/16-18 x 1.00	
N2	18	38	Hex Nut 5/16-18	
W1	8	8	Flat Washer 1/4	
W2	20	50	Flat Washer 5/16	
H1-5	8	8	Hex Bolt 1/4-20 x 1.00	

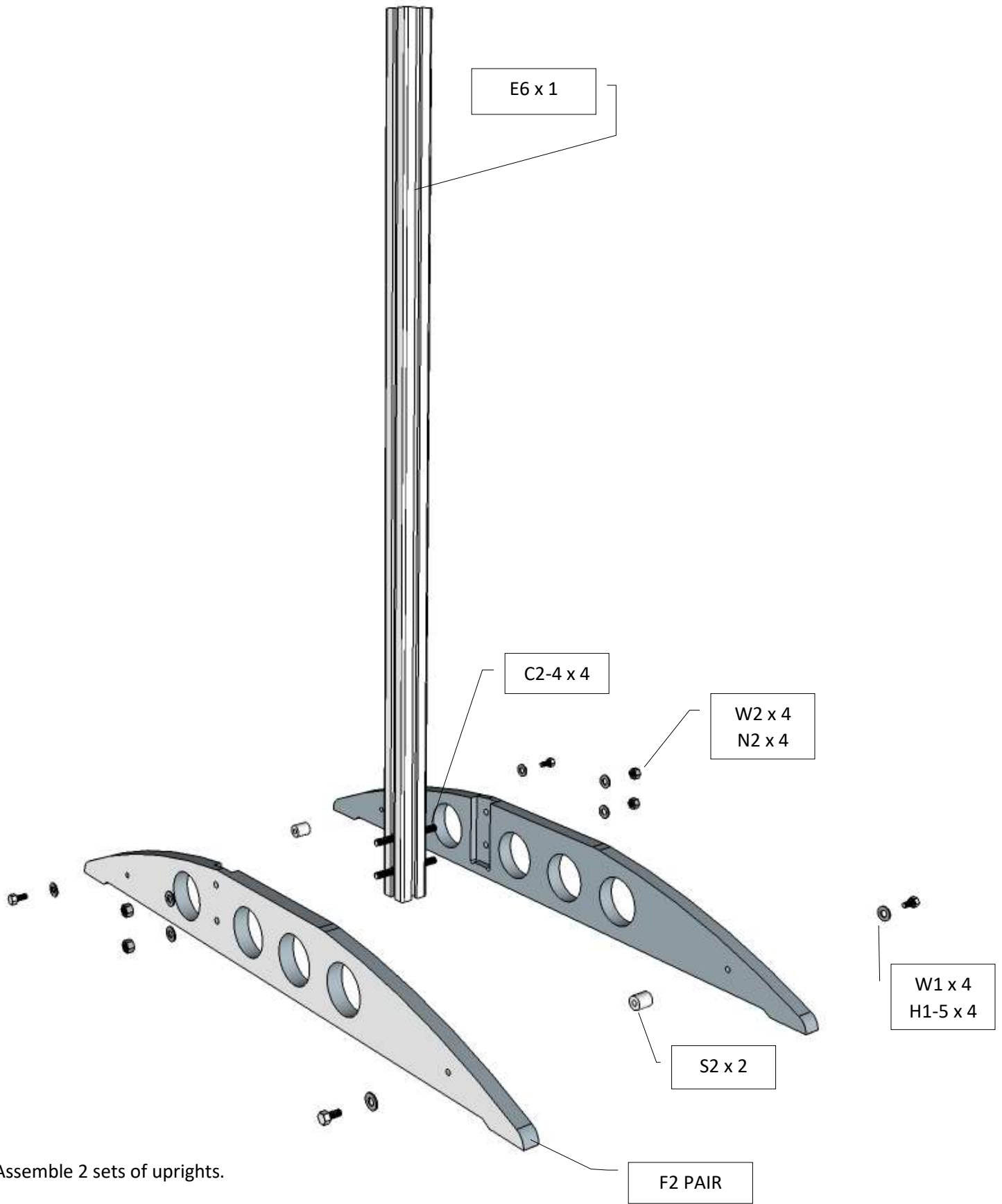
H2-1	6	12	Hex Bolt 5/16-18 x 0.75	
P1	0	4	Screw 6-32 x 0.75	
S2	4	4	Threaded Spacer	
A5	4	6	End Cap	
A6	2	2	T-Plate	
A7	0	4	Angle Plate	

A8	1	3	Monitor Bracket Plate	
A9	1	3	SnapMount VESA Bracket	

Typical example of how to fasten parts to aluminum profile slots.

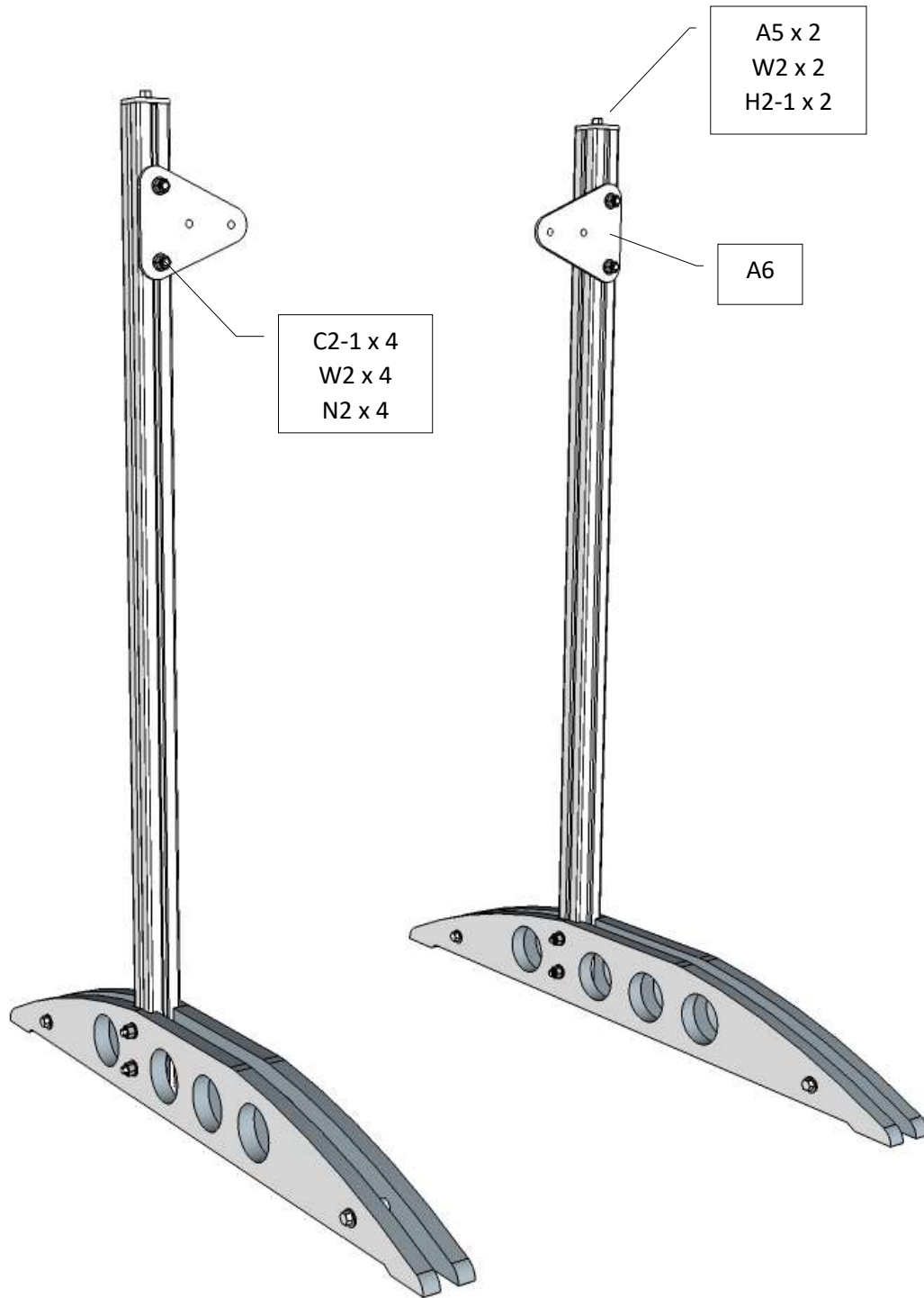


Step 1



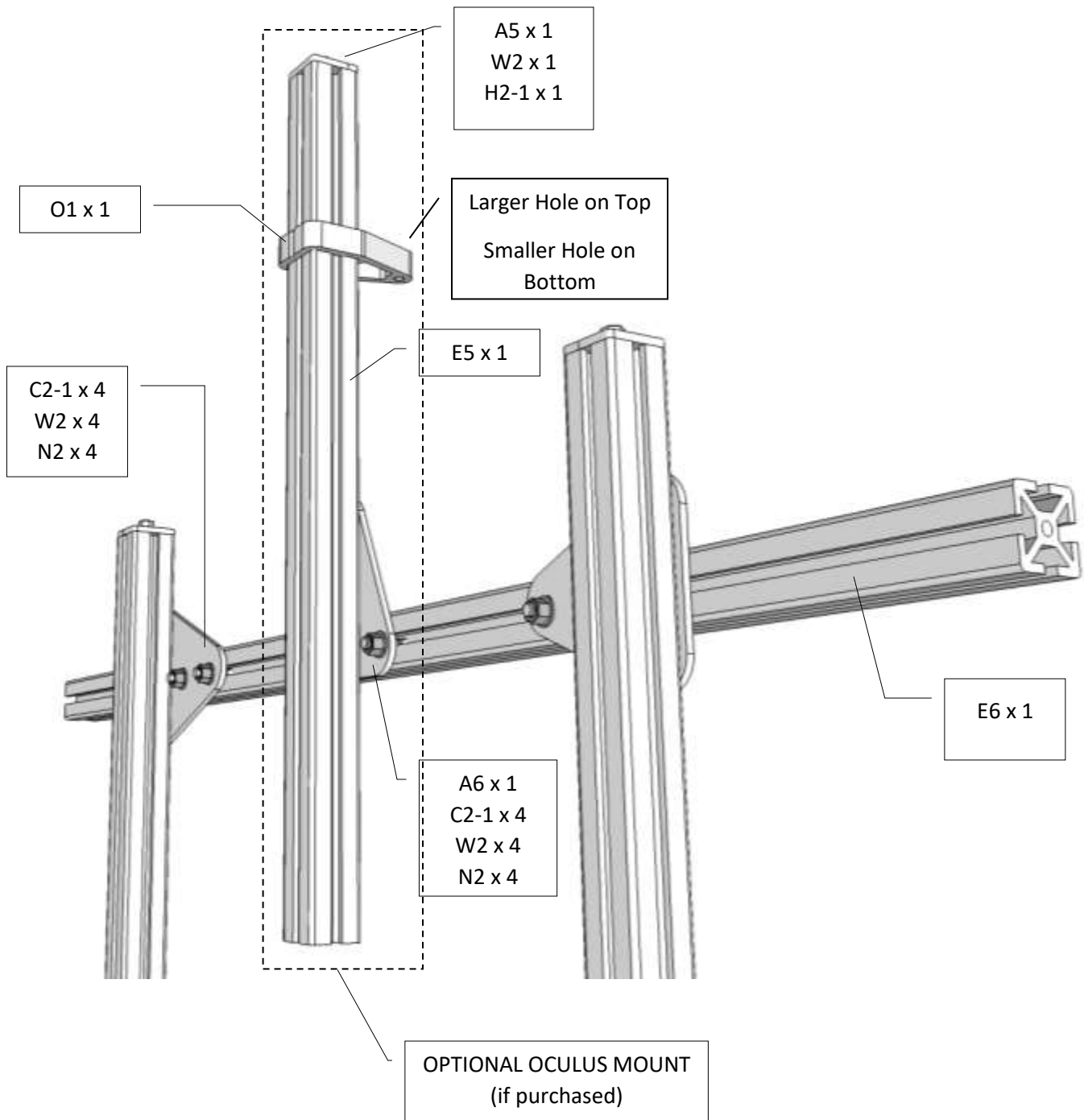
Assemble 2 sets of uprights.

Step 2



Set the A6 plates at the desired height for your display.

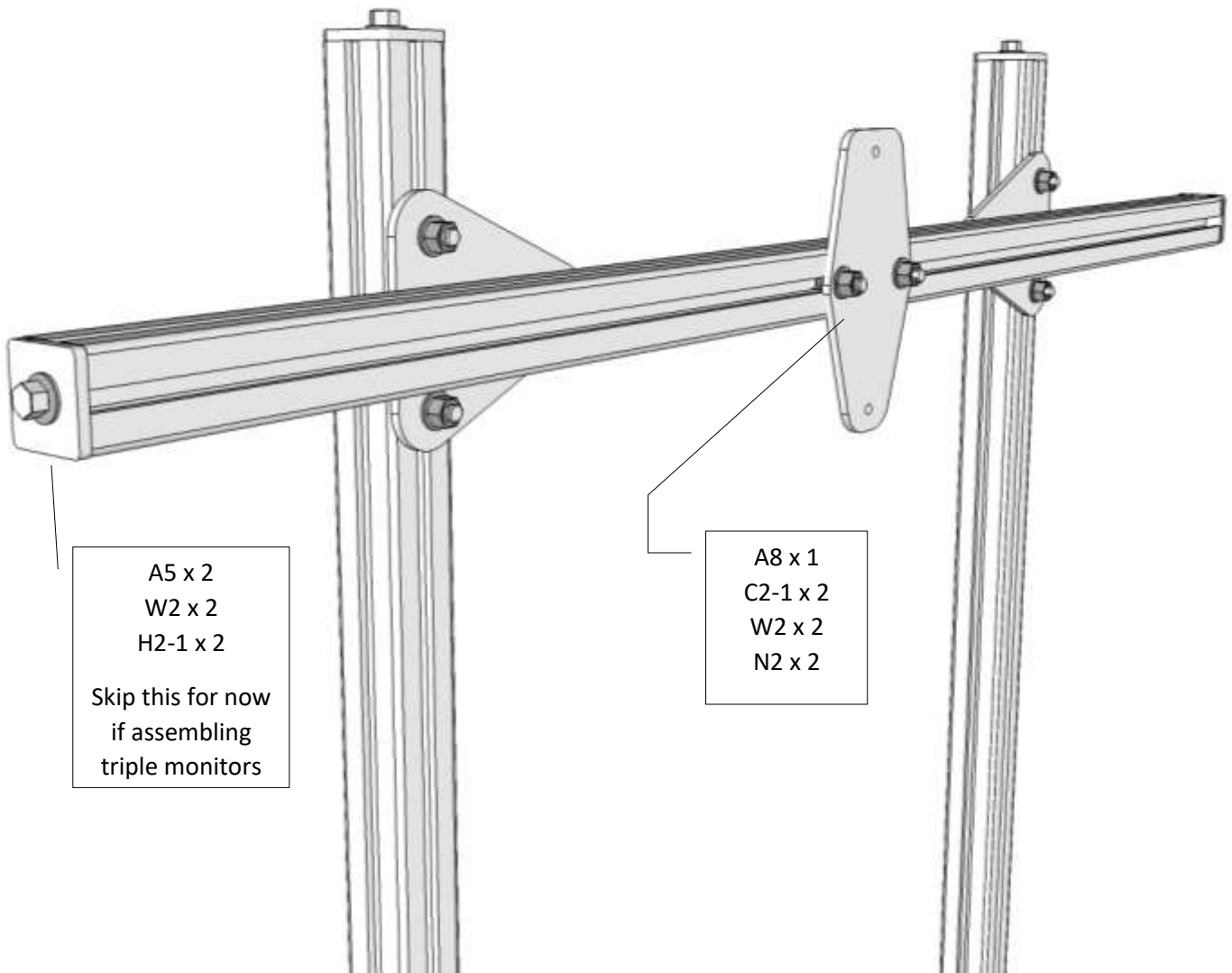
Step 3



Set the separation between the uprights to straddle your sim rig and center the E6 crossmember. Mount the upright for the Oculus CV1 Sensor centered on the E6 crossmember.

Slide O1 mount over the aluminum profile before installing the end cap on the top of E5. It will be a snug fit and will require some work to get it on. Once on the profile the mount will slide up and down with moderate effort.

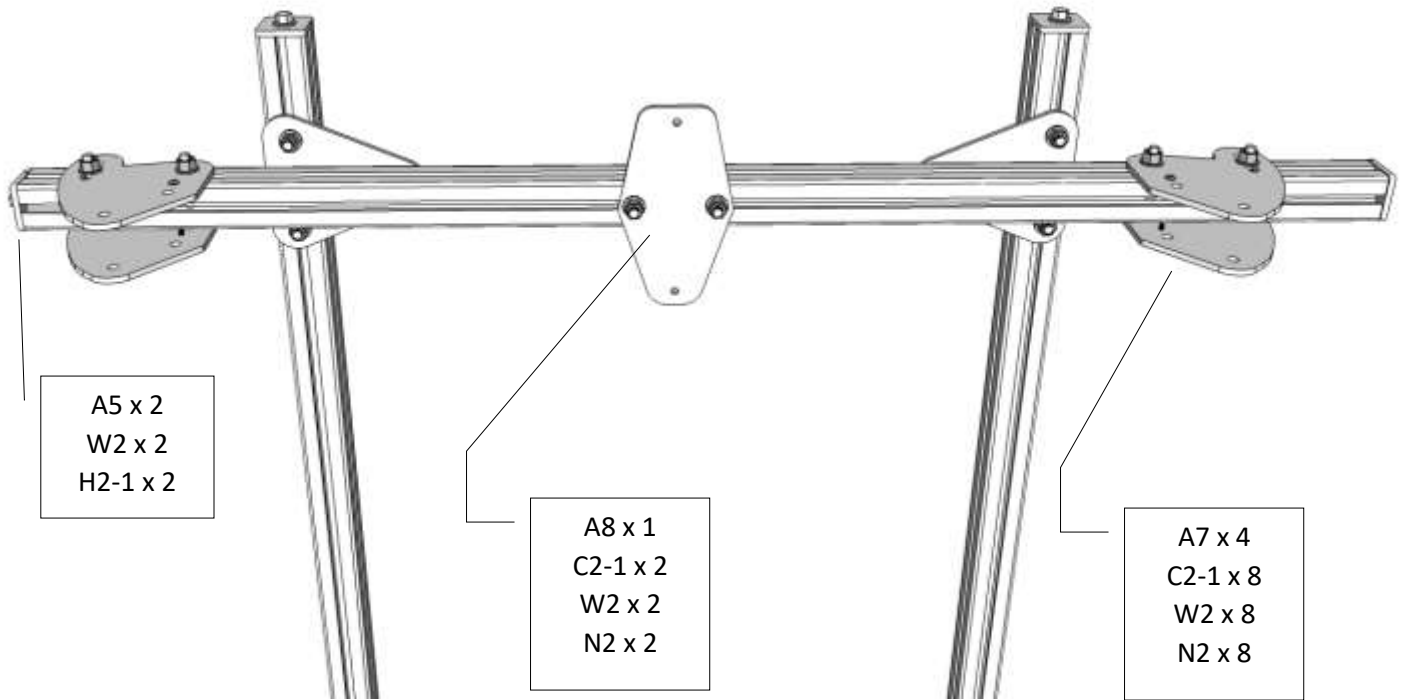
Step 4



Mount the A8 plate centered on the E6 crossmember.

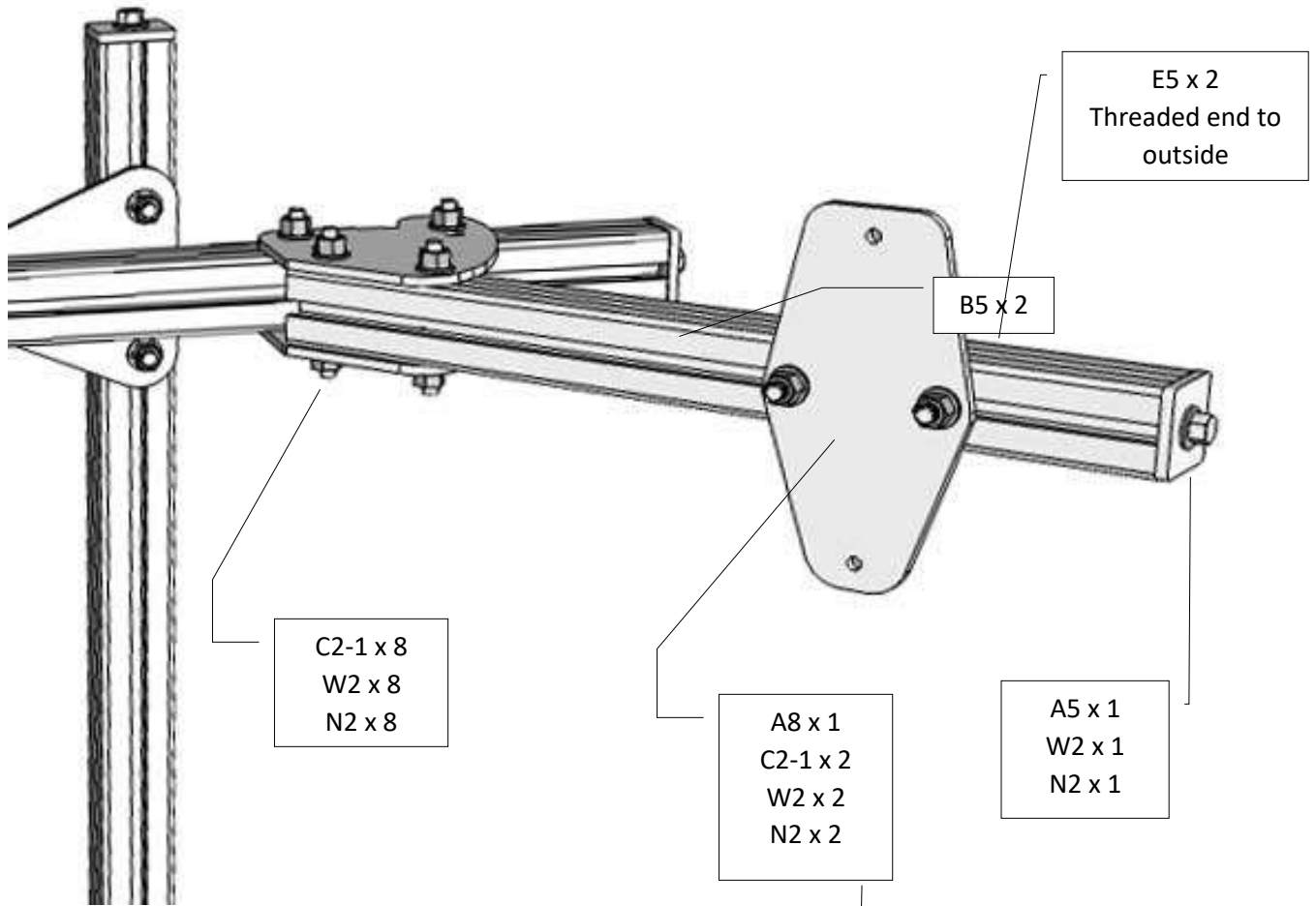
Step 5

For single monitor stand skip this step and proceed to step 8.



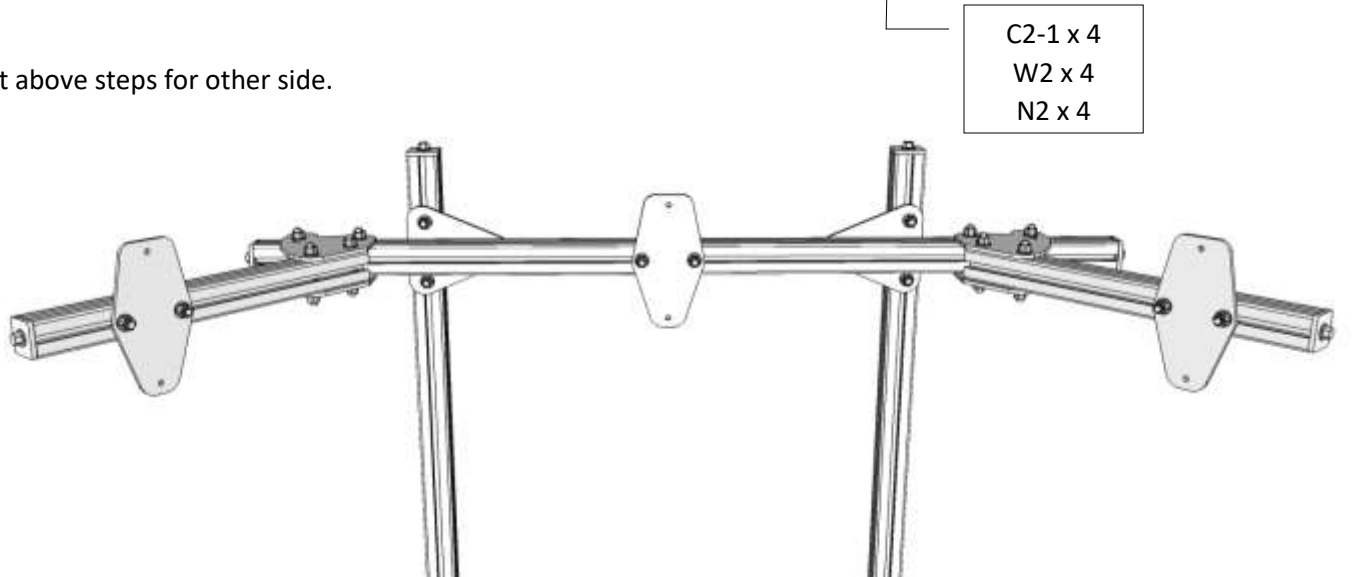
Mount the A8 plate centered on the E6 crossmember.

Step 6



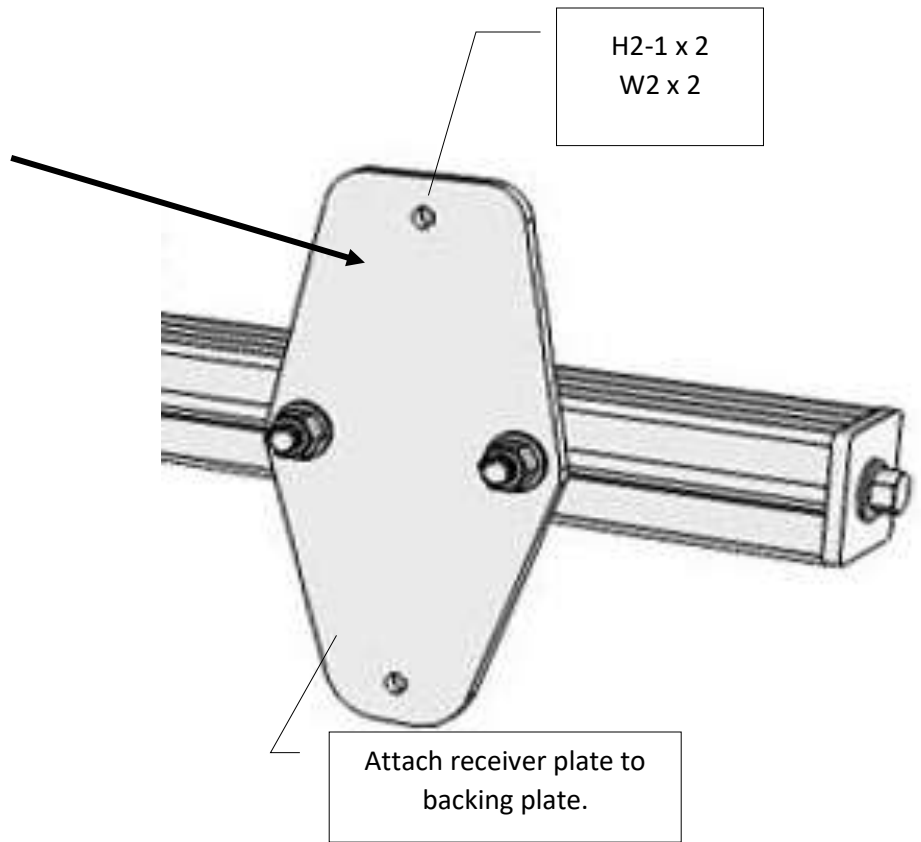
Step 7

Repeat above steps for other side.



Step 8

Repeat for each monitor.



Step 9



Attach to back of monitors using screws provided

Step 10



Monitor side of bracket
will snap onto receiver.

For triple monitor configurations you may now adjust the positioning of the brackets and side arms to align the monitors to your desired position.

WARNING!

Due to the variety of monitors that may be used with this stand, please make sure the monitor stand is stable after mounting the monitors. If you feel the stand may fall over accidentally, please take steps to anchor it to your rig.