

RICMOTEC™ HIGH PERFORMANCE SIM-RACING EQUIPMENT

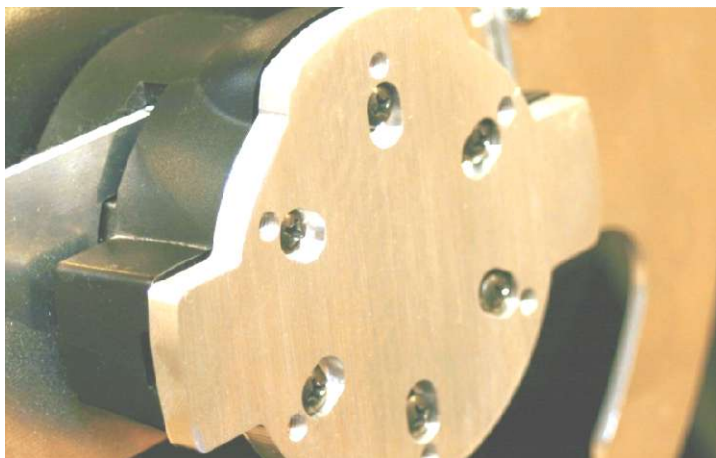
PTT Button Box for Logitech G27 Wheel Base with Aftermarket Wheel



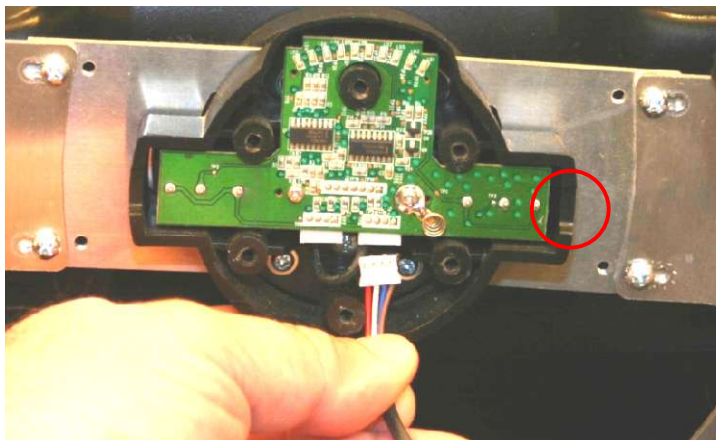
Installation Instructions

This guide will help you install your PTT button box, but since every wheel adapter and steering wheel is different you will need to refer to the instructions that shipped with your wheel adapter.

CAUTION: Be careful to avoid static build-up while handling the electronics in your wheel.



Remove your aftermarket wheel and the wheel adapter.

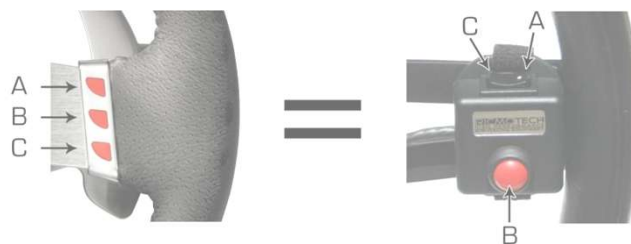


Plug the button box into one of the two connector

ports. It does not matter which. You can use two PTT button boxes and plug one into each connector port for additional functions. Carefully route the wire through the wire notch (circled) and re-install the wheel adapter and your wheel.



Secure the button box to the wheel spoke as shown by threading the Velcro strap through the eyelets and then folding them onto themselves so they lock together.



You may now go into the controls screen in your game and map the buttons to whichever function you wish.

Notice: Ricmotech is not responsible for any damage you may cause to your Logitech® wheel during the installation of the PTT button box. Installation of this device may void the original manufacturer's warranty.

Need Help?

If you run into any problems during the installation of the PTT box, please contact us directly at technical support at (305) 417-9241 or via email at mail@ricmotech.com.

Due to constant improvements to our products, the product you receive may vary slightly from the product shown in the illustrations.

Copyright 2015, Ricmotech LLC

Logitech® and G27 are trademarks of the Logitech® companies and the terms are used for reference purposes only. Ricmotech LLC is not affiliated with the Logitech® companies.